

# Final Year Placement Management System

Charlotte Katwa<sup>1</sup>, Kashmira Sanjana<sup>2</sup>, Pooja Parmar<sup>3</sup>

<sup>1,2,3</sup> Information Technology, Mumbai University, Mumbai, Maharashtra, India-400016.

Email address: <sup>1</sup>charlottekatwa94@gmail.com, <sup>2</sup>kashmirasanjana@gmail.com, <sup>3</sup>poojaparmar9402@gmail.com

**Abstract**—The final year placement management system is a total management and informative system, which provides the up-to date information of all the students in our college. It helps our college to overcome the difficulty in keeping records of hundreds and thousands of students, searching for a student eligible for recruitment, having complete details of all the companies that visited our college. It helps in effective and timely utilization of the hardware and the software resources. The home page will contain various tabs such as TPO login, exam cell login and student login. These tabs are linked to the login pages that will further guide them to the required page. All the users have some common services like changing password, searching for details, checking the details, mailing to administrator. This package is developed in windows platform. The programming languages used are HTML as the front end and PHP and MySQL as the back end.

**Keywords**— Student information system; database; HTML; SQL.

## I. INTRODUCTION

The project named—Final Year Placement Management System (FYPMS), is a web based application developed in the windows platform for the training and placement (TPO) department of our college in order to provide the details of its students in a database for the companies to their process of recruitment provided with a proper login. The FYPMS contains all the information about the students. The system stores all the personal information of the students, like their personal details, their academic details, the company details and the placement details along with an eligibility criterion for the students eligible for certain companies. This system is an online application that can be accessed throughout the organization with the proper login provided. This system is used as an application for the TPO of our college to manage the student information with regards to placement.

This project contains all the details of the students that can be viewed by all the students (read only). By maintaining student's information, the system helps to have selections to be made easy for a company in its test for the recruitment process. The exam cell will enter the information about the students only. So, our project provides a facility of maintaining the details of the students, and gets the requested list of candidates for the companies who would like to recruit the people based on a given query. Also the eligible students will receive an email including the details of the company and also they will receive an email in which the date-time along with the location and the necessary details will be provided.

## II. REVIEW OF LITERATURE

Student Automation System for Placement Cell (SAS) provides a simple interface for maintenance of student information. It can be used by Training & Placement officer of educational institutes or colleges for accessing students' records as per the placement criteria. The creation and management of accurate, conversant information regarding a student's academic career is critically important in the university as well as in placement cell. Student Automation System deals with all kinds of student's basic information,

academic details, account details and placement details too. It will also have faculty, staff and HR modules for maintaining and updating the student records. Staffs maintain the student details, account details and create student ID and password, while faculty updates their respective educational and academic details and inform students via e-mail. It also facilitates students to view their academic details. The main purpose of this SAS is to reduce the consumption of time during maintaining the records of students and inform them via e-mail. Without a Student Automation System, managing and maintaining the details of the student is a tedious job for any educational institution or organization. Student Automation System will store all the details of the students including their background information, educational qualification, personal details, sessional marks, university marks and all the information related to their resume. SAS is a web application that can be accessed throughout the organization and outside as well with specified login provided. This system can be used as a tool for the HR of the college to access the student information with regards to placement.

Computer based information system are designed to improve existing system. HR can notify the students about the recruitment online via sending e-mail. So the faculty can also notify the students about the marks, notification and account information online via e-mail. Improve accuracy in result. It has user friendly interface having quick authenticated access to the records. It provides the faculty of maintaining the educational details of the students. It provides the staff of maintaining the new student, account details of the students. It will decrease the paper work and use the maximum capabilities of setup and organization as well as it will save time and money, which are spending in maintaining reports and collecting data. This system can be used as an application for college to manage the student records according placement.

In an existing system, all processes at the time of placement of students are handled manually by accessing the student information from respective department, which is very slow and consuming much efforts and time. This process is so difficult when the number of users increase. There are any limitations for the existing system, in manual HR; all the work

done at placement cell is by human intervention due to which there were more chances of errors. Searching is done manually based on the company criteria HR will identify the eligible student by looking the excel sheet. HR has to see each and every student marks and their eligibility. No searching method is provided. The student will get notify through traditional method i.e. using notice board. There may be chances of loss of opportunity. The students were not being made aware of the HR activity. Since the number of students are growing and management has to handle records of all students. It is facing a little bit problems in maintaining the records of students .It is required to design of a computerized student automation module to speed up capability.

### III. PROBLEM DEFINITION

Now a day's campus placements are conducted in all colleges. Various software and other sector companies are conducting campus selections for selecting candidates based on merit. All the student details are maintained manually and our software aims to automate the same. Also this project is made to facilitate students in college to register and communicate with Placement Office in person. The users can access the information easily and the data can be retrieved in no time. On the main page there are options for sign up and sign in. A registered student can directly login using username and password and upload his/her resume. In the student information provides us with the fields of personal details, educational qualifications. The job details of the placed students will be provided by the administrator. The two administrator plays an important role in our project; from checking the information to updating the information of the students. In this project the administrator as well as the students can retrieve the student details as and when required.

### IV. IMPLEMENTATION METHODOLOGY

On the website we have 3 tabs:

The TPO, the exam cell and the student.

#### a. TPO tab

The TPO tab will first direct us to the login page, from which the TPO will have a unique login id and password, which then directs us to a new page. This page has tabs like student details, company details, generate list and resume.

The student details tab will allow the TPO admin to check the details for either a particular student or for the entire stream (IT, COMPS, EXTC)

The company details tab will give a systematic criteria form format where the TPO admin can enter the necessary company details. Generate list tab will give the TPO admin the entire list of students that have registered for a company and the admin can segregate the list according to the company name.

Resume tab will let the admin to check the resume of a particular student with the respective id of the student.

#### b. Exam cell

The exam cell too has a login page that will direct to the page where the admin can add student details as well as check student details by entering their respective ids

#### c. Student tab

The student tab will again have a login page where the students are allowed to check their details and they can upload their resume as well.

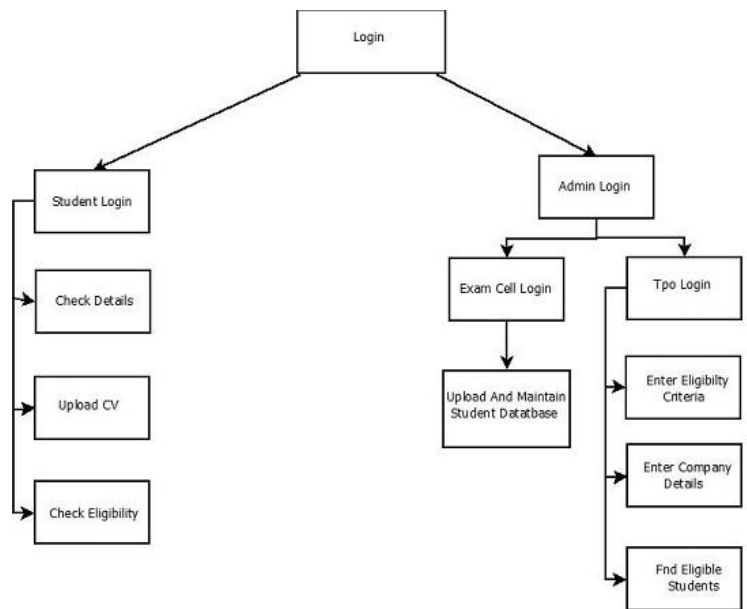


Fig. 1. Flowchart.

### V. CONCLUSION

Our project provides the facility of maintaining the details of the students in a database. It also provides a requested list of candidates to recruit the students based on given eligibility criteria along with the complete company details. Administrator logging in may also search any information put up by the students. This project will aid our college to keep complete information about students. This will also help in fast access procedures in placement related activities.

### VI. REFERENCES

- [1] N. Rathod, S. Shah, and K. Shirsat, "An interactive online training and placement system," *International Journal of Advanced Research in Computer Science and Software Engineering*, vol. 3, issue 12, pp. 505-511, 2013.
- [2] A. Ramteke, M. Deogade, and P. Deogade, "Student automation system for placement cell," *Iord Journal of Science & Technology*, vol. 2, issue 2, 2015.
- [3] S. R. Bharamagoudar, R. B. Geeta, and S. G. Totad, "Web based student information management system," *International Journal of Advanced Research in Computer and Communication Engineering*, vol. 2, issue 6, pp. 2342-2348, 2013.
- [4] [www.slideshare.net/riteshtechsoft/traning-and-placement-management-system](http://www.slideshare.net/riteshtechsoft/traning-and-placement-management-system)